



Sandwell Safeguarding Children Board Annual Report 2015

**Presentation to Council
January 12th 2016**

John Harris – Independent Chair



Overview

- The role of SSCB
- Board working arrangements
- Effectiveness of SSCB
- Effectiveness of local safeguarding arrangements



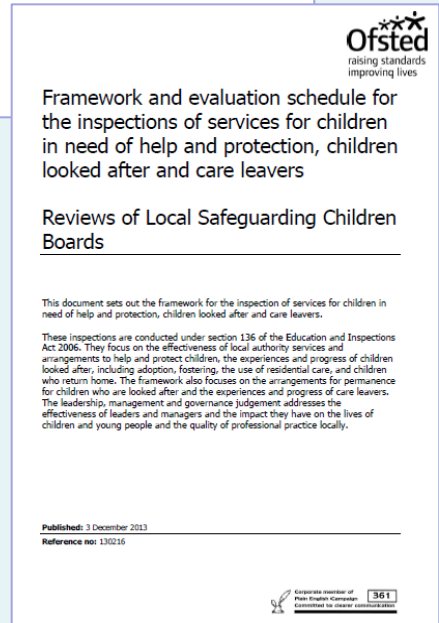
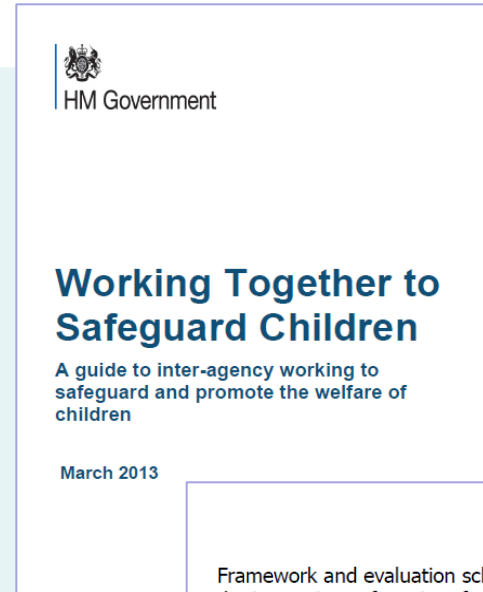
Role of SSCB



- Coordinate what is done by each person or body represented on the Board for the purpose of safeguarding and promoting the welfare of children in the area of the authority; and
- Ensure the effectiveness of what is done by each such person or body for that purpose

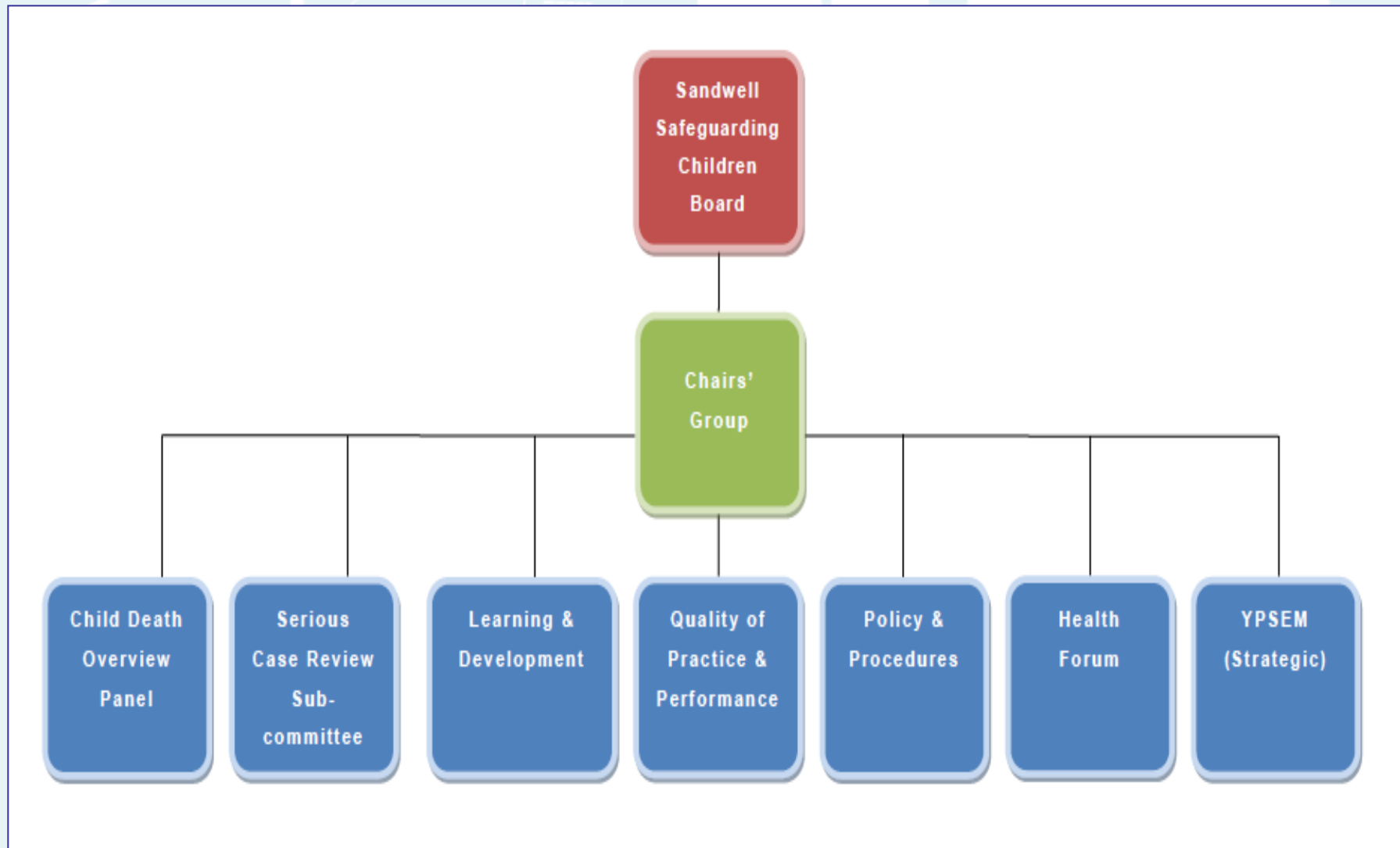
- Scope of LSCBs includes 'early help'
- Focus on learning and improvement

- The inspection framework includes review of LSCBs by OFSTED, with grading





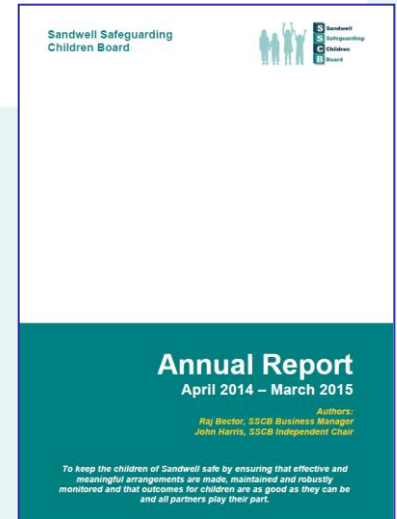
Board Arrangements





Annual Report Requirements

- rigorous and transparent assessment of the performance and effectiveness of local services
- identify areas of weakness, the causes of those weaknesses and the action being taken to address them
- include lessons from serious case reviews, child death reviews and other relevant reviews
- report on the outcome of assessments undertaken on the effectiveness of Board partners' responses to CSE
- include an analysis of how the LSCB partners have used their data to promote service improvement for vulnerable children and families
- include data on children missing from care, and how the LSCB is addressing the issue.
- list the contributions made to SSCB by partner agencies and details of what SSCB has spent





Route through the report

- Board effectiveness
- Local arrangements (local authority and other partners)
- Learning and Improvement
- Key Safeguarding Risks





Effectiveness of SSCB



- Chair's Strategic Review in September 2014 found Board not meeting statutory functions
- Ten-point programme to get Board to at least 'requires improvement' in six months
- OFSTED found that Board had not made sufficient progress since last inspection...but commended new direction and programme



Effectiveness of Local Arrangements



- Progress over last twelve months but substantial challenges remain for local authority and partners
- Four key issues:
 1. Shared understanding and consistent application of thresholds to ensure timely response to need and risk
 2. Significantly improve the response to CSE
 3. Ensure all partners contribute to effective and systematic early help arrangements
 4. Promote a culture of shared learning and improvement from case reviews and audits



Update January 2016



Effectiveness of SSCB

- Good progress since the inspection
- Action on almost areas for improvement now completed or 'on track'
- SSCB now recognised by all partner agencies and externally as making an impact on system-wide improvements as well as meeting its own responsibilities



Update January 2016

Progress on Key Issues:

Thresholds – responding to changing risk and need

- Too high a proportion of casework continues to be inadequate. Driving improvement in quality of practice is the top issue in next three months.

Responding to CSE

- Good commitment from partner agencies but improvements required in relation to all ten of SSCB's areas for assurance in relation to CSE

Early Help

- Consolidation of Sandwell's early help offer, with greater commitment required from partner agencies, particularly health professionals

Learning and Improvement

- Coordinated multi-agency audit programme established, but questionable how far it is making an impact on practice improvement.
- Serious Case Review due for publication in January